



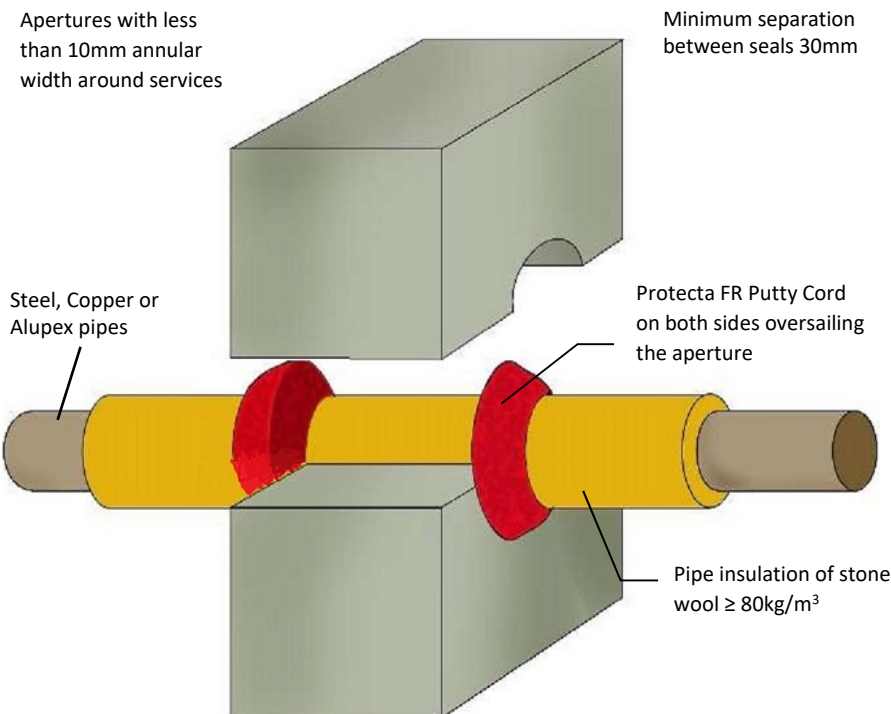
FIRESTOP CENTRE

Authorised New Zealand Distributor
Ph (09) 483 4000 www.firestopcentre.co.nz

Protecta FR Putty Cord - Concrete Wall Pipe with Continuous Insulation

Installation Instructions

- 1. Preparation:** Before installing Protecta® FR Putty Cord, ensure the surface of all service penetrations and surrounding construction is wiped clean, dry, and free from loose contaminants, dust, oils, and grease.
- 2. Positioning:** Place the Putty Cord around the services so that it seals the services to the wall completely.
- 3. Sealing:** Press the Putty Cord into the wall and services with your thumbs to form a fillet or V-shaped joint, ensuring good contact all the way around. Required cone size: 15mm x 15mm
- 4. Compatible Services:** Pipes may be Steel, Copper or Alupex (PEX-AL-PEX). Note that copper and alupex systems are AS1530 compliant only for closed systems.



UL Technical Assessment Report
No. 4791111748-1 Page 26
AS1530.4-2014 AS4072.1-2005

System FC406

Products	Protecta FR Putty Cord
Application	Fire stopping of pipes with continuous insulation in rigid walls
Construction	Minimum wall thickness of 150mm

Fire & Sound classification

○	up to 40mm with 20mm thick insulation	FRR -/120/120
○	up to 324mm with 30-80mm thick insulation	FRR -/240/180
#	up to 54mm, with 30-80mm thick insulation	FRR -/240/120*
°	16mm with 20mm thick insulation	7kk''
°	up to 75mm with 30mm thick insulation	7kk''
* Closed systems only		



Protecta®

As a part of our policy of on-going product development and testing, we reserve the right to modify, alter or change product specifications without giving notice. All information contained in this document is given in good faith and is provided for guidance only. Any drawings provided are for illustrative purposes only. As Polyseam has no control over the methods or competence of installation and of prevailing site conditions, no warranties, expressed or implied, is intended to be given as to the actual performance of the product mentioned or referred to herein and no liability whatsoever will be accepted for any loss, damage or injury arising from the use of the information given.

For all technical details on the products specified please refer to the technical data sheets that can be found on www.firestopcentre.co.nz

Signed and approved:

Sheet size: A4	Drawn date & no: 29/5/18 R1.1
Scale: NTS	Drawn by: K.B